

URBAN
SYSTEMS

Project #: 5582.0001.01
 Author: DL
 Checked: AS
 Status: --
 Revision: --
 Date: 2026 / 3 / 24



Coordinate System:
NAD 1983 UTM Zone 14N

Data Sources:
 - Province of Manitoba
 - Natural Resources Canada
 - Open Street Map

The accuracy & completeness of information shown on this drawing is not guaranteed. It will be the responsibility of the user of the information shown on this drawing to locate & establish the precise location of all existing information whether shown or not.

Scale:
1:180,000
(When plotted at 11"x17")

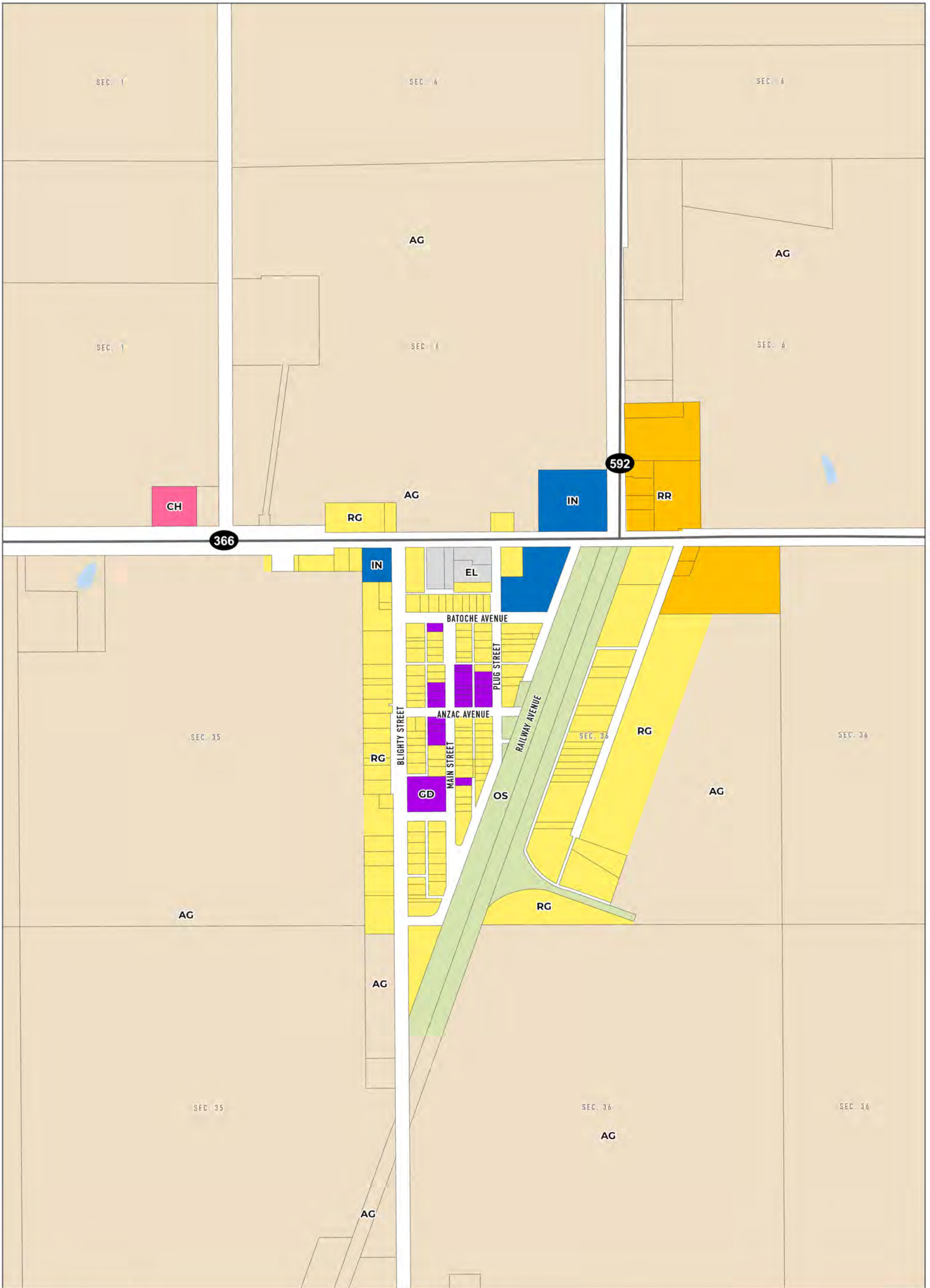


Legend

- Municipal Boundary
- Provincial and National Park
- Reserve Lands
- Railroad
- Zoning Bylaw Designations**
- Agricultural General
- Commercial Highway
- Commercial Main Street
- General Development
- Institutional
- Lakeside General
- Lakeside Residential
- Light Industrial
- Open Space
- Residential General
- Residential Multi
- Rural Residential
- Heavy Industrial

Rural Municipality of Riding Mountain West

Zoning ByLaw - Overview



Project #: 5582.0001.01
 Author: DL
 Checked: AS
 Status: --
 Revision: --
 Date: 2026 / 3 / 24



Coordinate System:
 NAD 1983 UTM Zone 14N

Scale:
 1:7500
 (When plotted at 11"x17")

Data Sources:
 - Province of Manitoba
 - Natural Resources Canada
 - Open Street Map

The accuracy & completeness of information shown on this drawing is not guaranteed. It will be the responsibility of the user of the information shown on this drawing to locate & establish the precise location of all existing information whether shown or not.

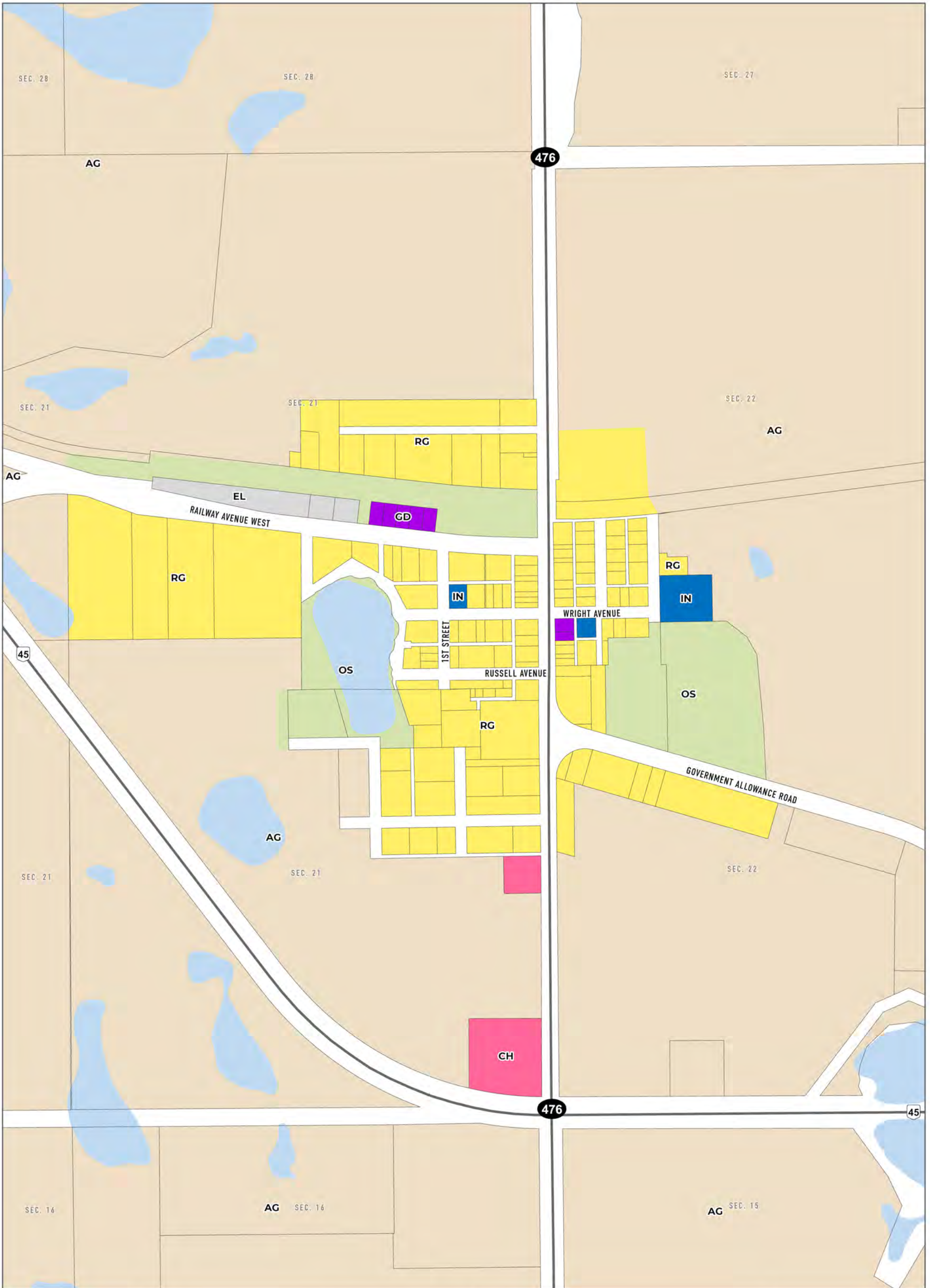


Legend

- | | |
|---------------------------|---------------------|
| Zoning Bylaw Designations | Light Industrial |
| Agricultural General | Open Space |
| Commercial Highway | Residential General |
| General Development | Rural Residential |
| Institutional | |

Rural Municipality of
 Riding Mountain West

Zoning ByLaw -
 Inglis



URBAN
SYSTEMS

Project #: 5582.0001.01
 Author: DL
 Checked: AS
 Status: --
 Revision: --
 Date: 2026/3/24



Coordinate System:
NAD 1983 UTM Zone 14N

Data Sources:
 - Province of Manitoba
 - Natural Resources Canada
 - Open Street Map

The accuracy & completeness of information shown on this drawing is not guaranteed. It will be the responsibility of the user of the information shown on this drawing to locate & establish the precise location of all existing information whether shown or not.

Scale:
1:6,000
(When plotted at 11"x17")

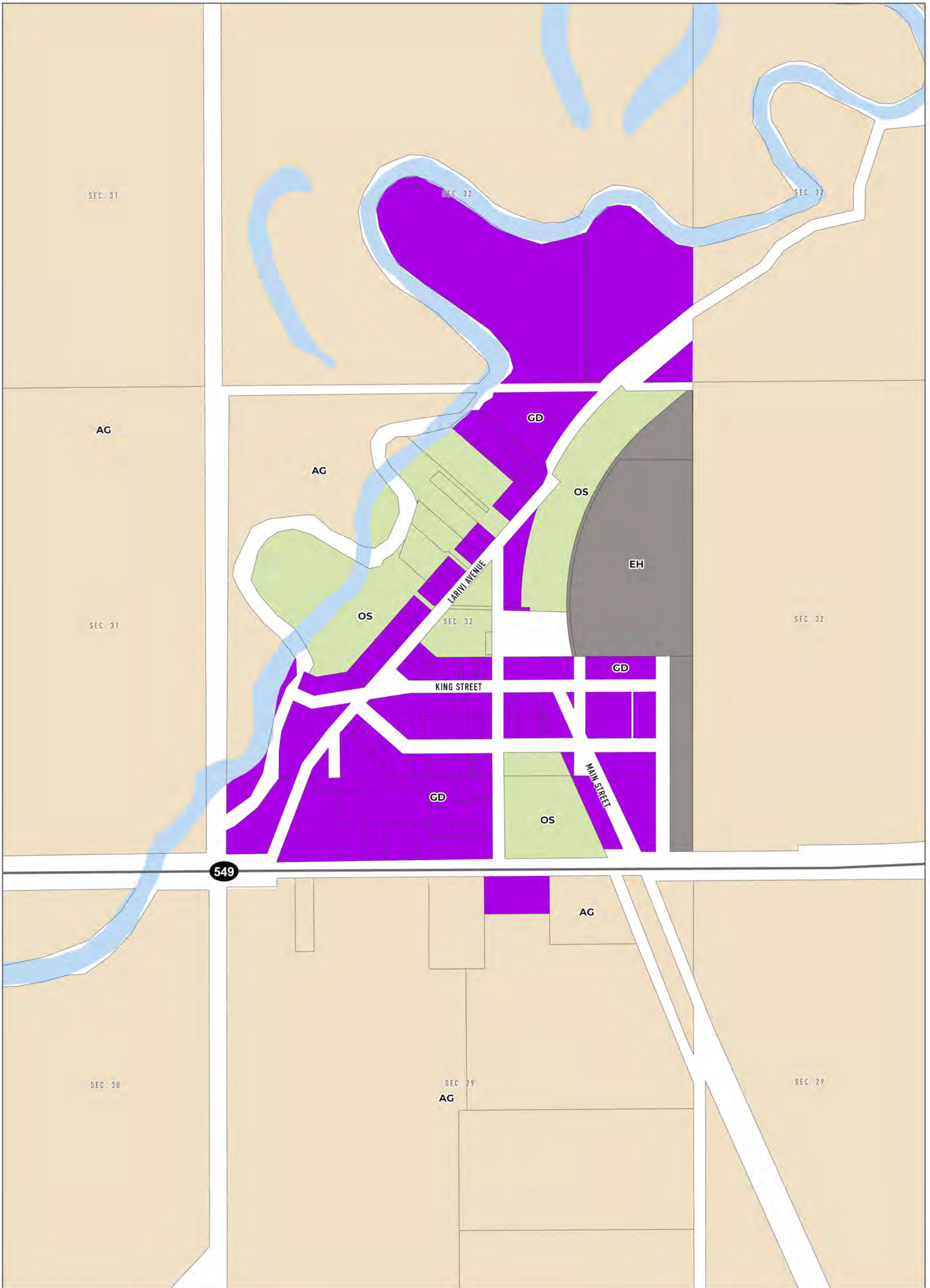


Legend

- | | |
|---------------------------|---------------------|
| Zoning Bylaw Designations | Institutional |
| Agricultural General | Light Industrial |
| Commercial Highway | Open Space |
| General Development | Residential General |

**Rural Municipality of
Riding Mountain West**

Zoning ByLaw -
Angusville



URBAN
SYSTEMS

Project #: 5582.0001.01
 Author: DL
 Checked: AS
 Status: --
 Revision: --
 Date: 2026 / 3 / 24



Coordinate System:
NAD 1983 UTM Zone 14N

Data Sources:
 - Province of Manitoba
 - Natural Resources Canada
 - Open Street Map

The accuracy & completeness of information shown on this drawing is not guaranteed. It will be the responsibility of the user of the information shown on this drawing to locate & establish the precise location of all existing information whether shown or not.

Scale:
1:6,000
(When plotted at 11"x17")



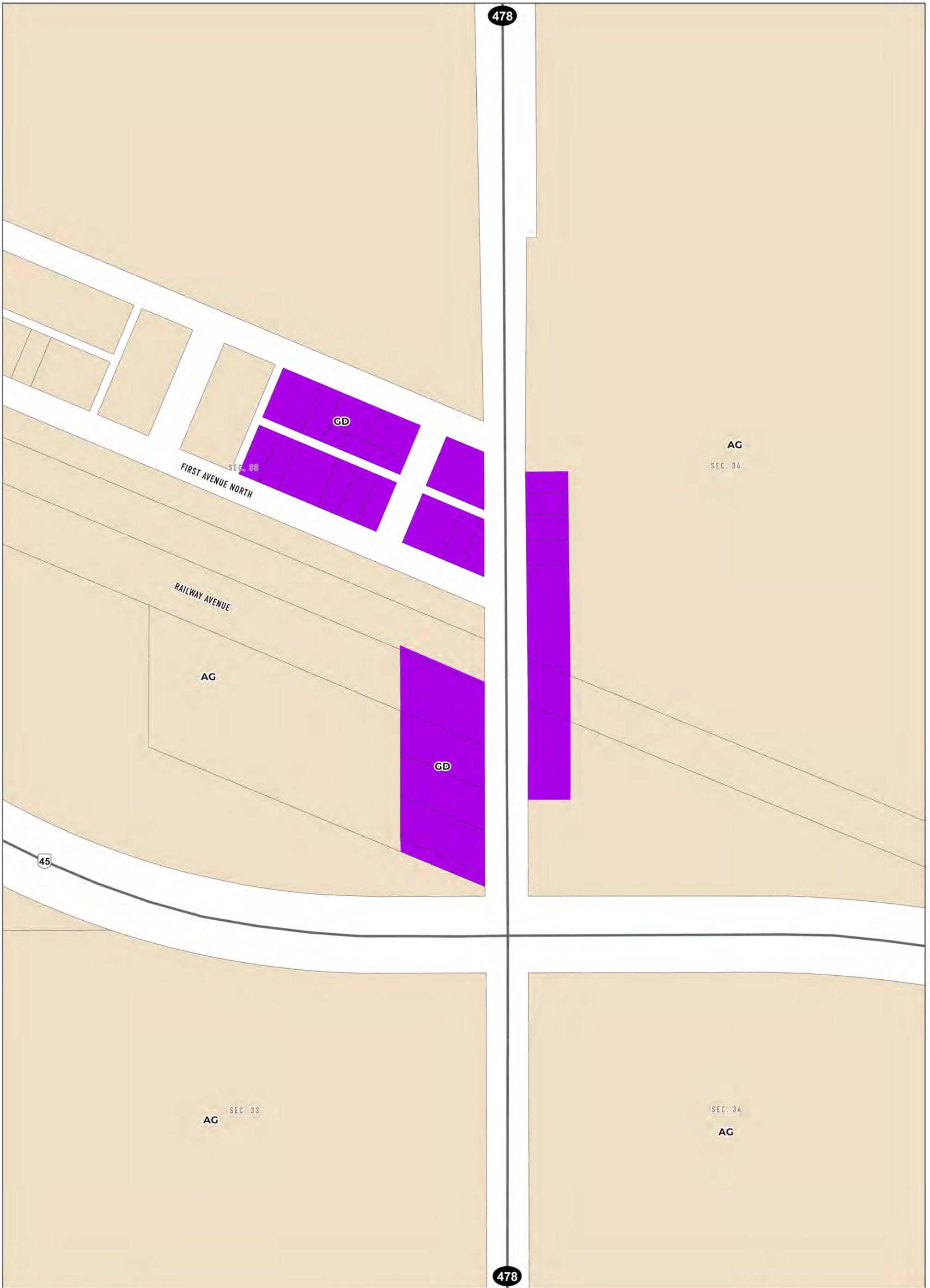
Legend

Zoning Bylaw Designations

- Agricultural General
- General Development
- Open Space
- Heavy Industrial

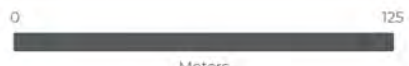
**Rural Municipality of
Riding Mountain West**

Zoning ByLaw -
Shellmouth



URBAN
SYSTEMS

Project #: 5582.0001.01
 Author: DL
 Checked: AS
 Status: --
 Revision: --
 Date: 2026 / 3 / 24



Coordinate System:
NAD 1983 UTM Zone 14N

Scale:
1:2,500
(When plotted at 11"x17")

Data Sources:
 - Province of Manitoba
 - Natural Resources Canada
 - Open Street Map

The accuracy & completeness of information shown on this drawing is not guaranteed. It will be the responsibility of the user of the information shown on this drawing to locate & establish the precise location of all existing information whether shown or not.



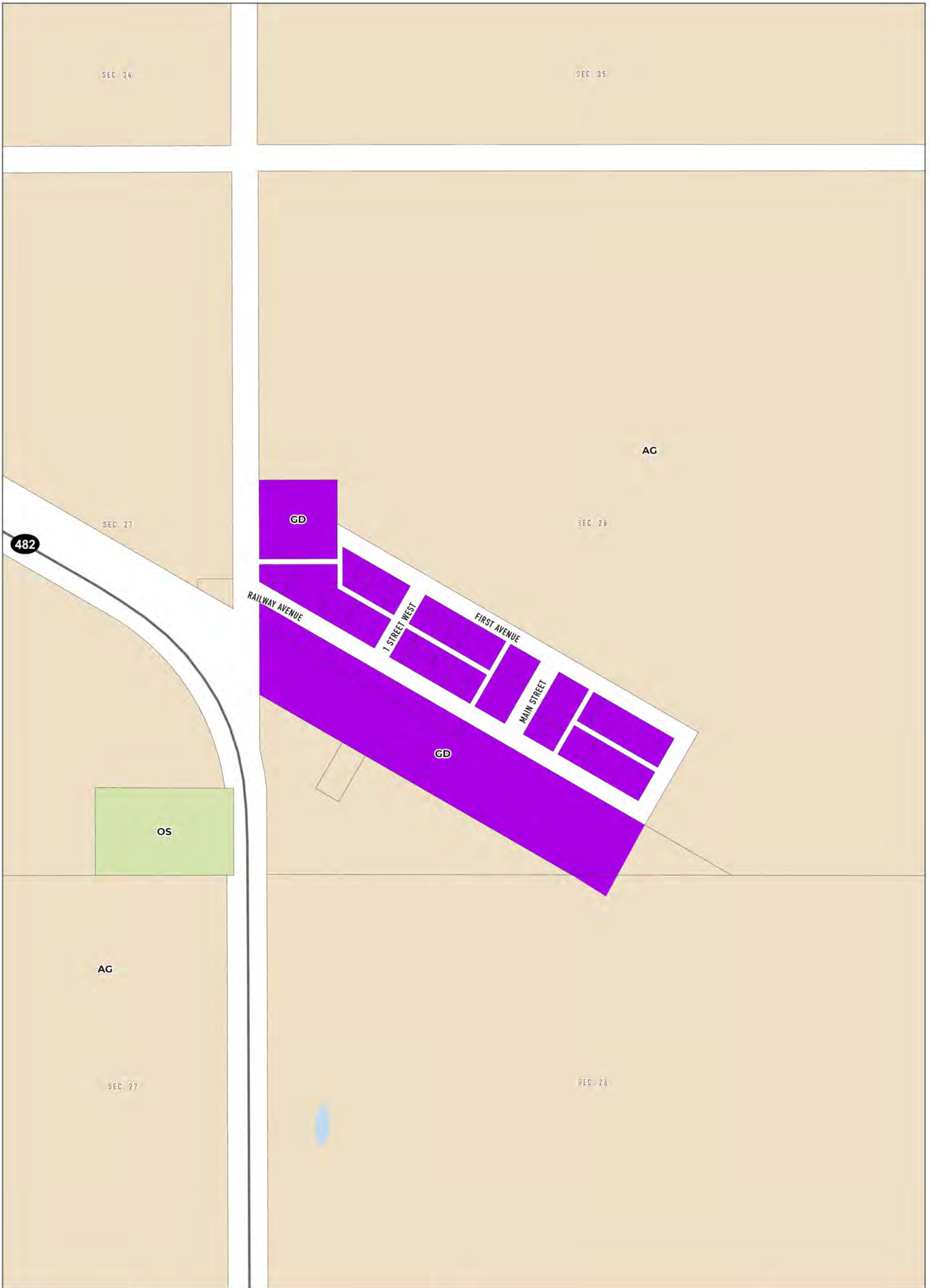
Legend

Zoning Bylaw Designations

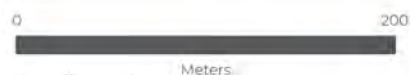
- Agricultural General
- General Development

**Rural Municipality of
Riding Mountain West**

Zoning ByLaw -
Silverton



Project #: 5582.0001.01
 Author: DL
 Checked: AS
 Status: --
 Revision: --
 Date: 2026 / 3 / 24



Coordinate System:
 NAD 1983 UTM Zone 14N

Data Sources:
 - Province of Manitoba
 - Natural Resources Canada
 - Open Street Map

The accuracy & completeness of information shown on this drawing is not guaranteed. It will be the responsibility of the user of the information shown on this drawing to locate & establish the precise location of all existing information whether shown or not.

Scale:
 1:4,000
 (When plotted at 11"x17")



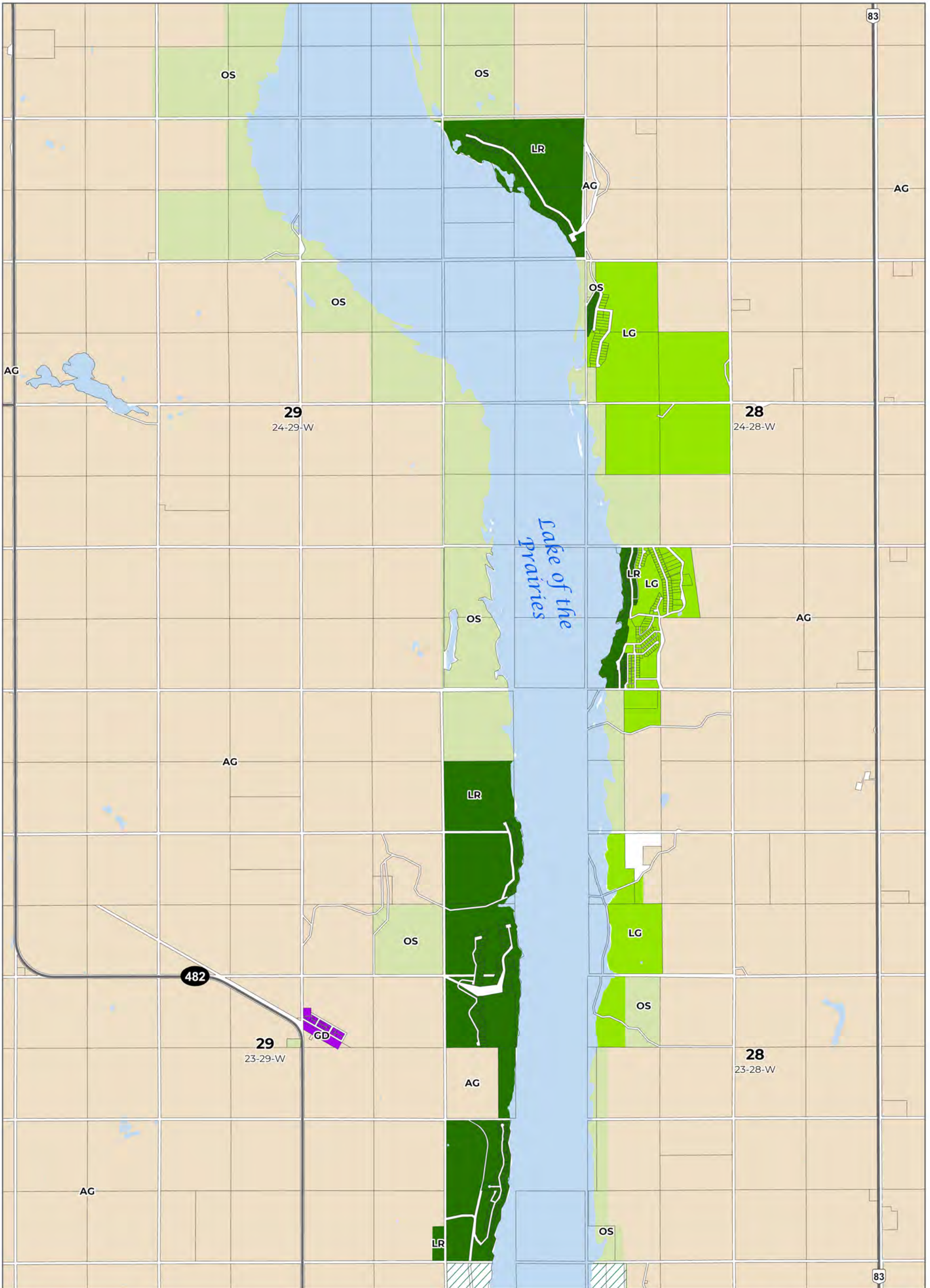
Legend

Zoning Bylaw Designations

- Agricultural General
- General Development
- Open Space

Rural Municipality of Riding Mountain West

Zoning ByLaw - Dropmore



URBAN
SYSTEMS

Project #: 5582.0001.01
 Author: DL
 Checked: AS
 Status: --
 Revision: --
 Date: 2026 / 3 / 24

0 1,000
 Meters
 Coordinate System:
 NAD 1983 UTM Zone 14N

Data Sources:
 - Province of Manitoba
 - Natural Resources Canada
 - Open Street Map

The accuracy & completeness of information shown on this drawing is not guaranteed. It will be the responsibility of the user of the information shown on this drawing to locate & establish the precise location of all existing information whether shown or not.

Scale:
 1:40,000
 (When plotted at 11"x17")

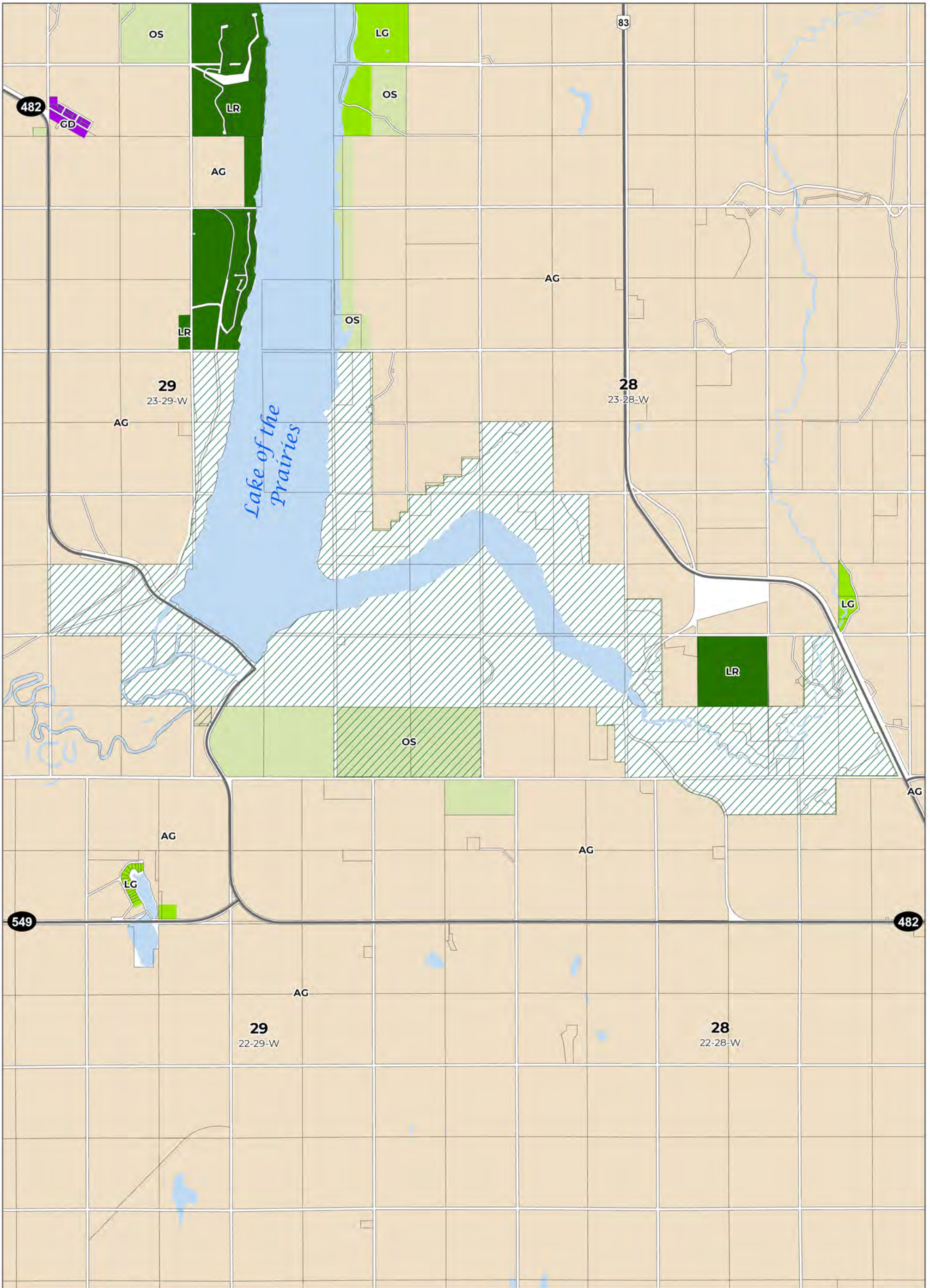


Legend

- Provincial and National Park
- Lakeside General
- Lakeside Residential
- Agricultural General
- Open Space
- General Development

Rural Municipality of Riding Mountain West

Zoning ByLaw -
 Lake of the Praries



URBAN
SYSTEMS

Project #: 5582.0001.01
 Author: DL
 Checked: AS
 Status: --
 Revision: --
 Date: 2026 / 3 / 24

0 1,000
 Meters
 Coordinate System:
 NAD 1983 UTM Zone 14N

Data Sources:
 - Province of Manitoba
 - Natural Resources Canada
 - Open Street Map

The accuracy & completeness of information shown on this drawing is not guaranteed. It will be the responsibility of the user of the information shown on this drawing to locate & establish the precise location of all existing information whether shown or not.

Scale:
 1:40,000
 (When plotted at 11"x17")

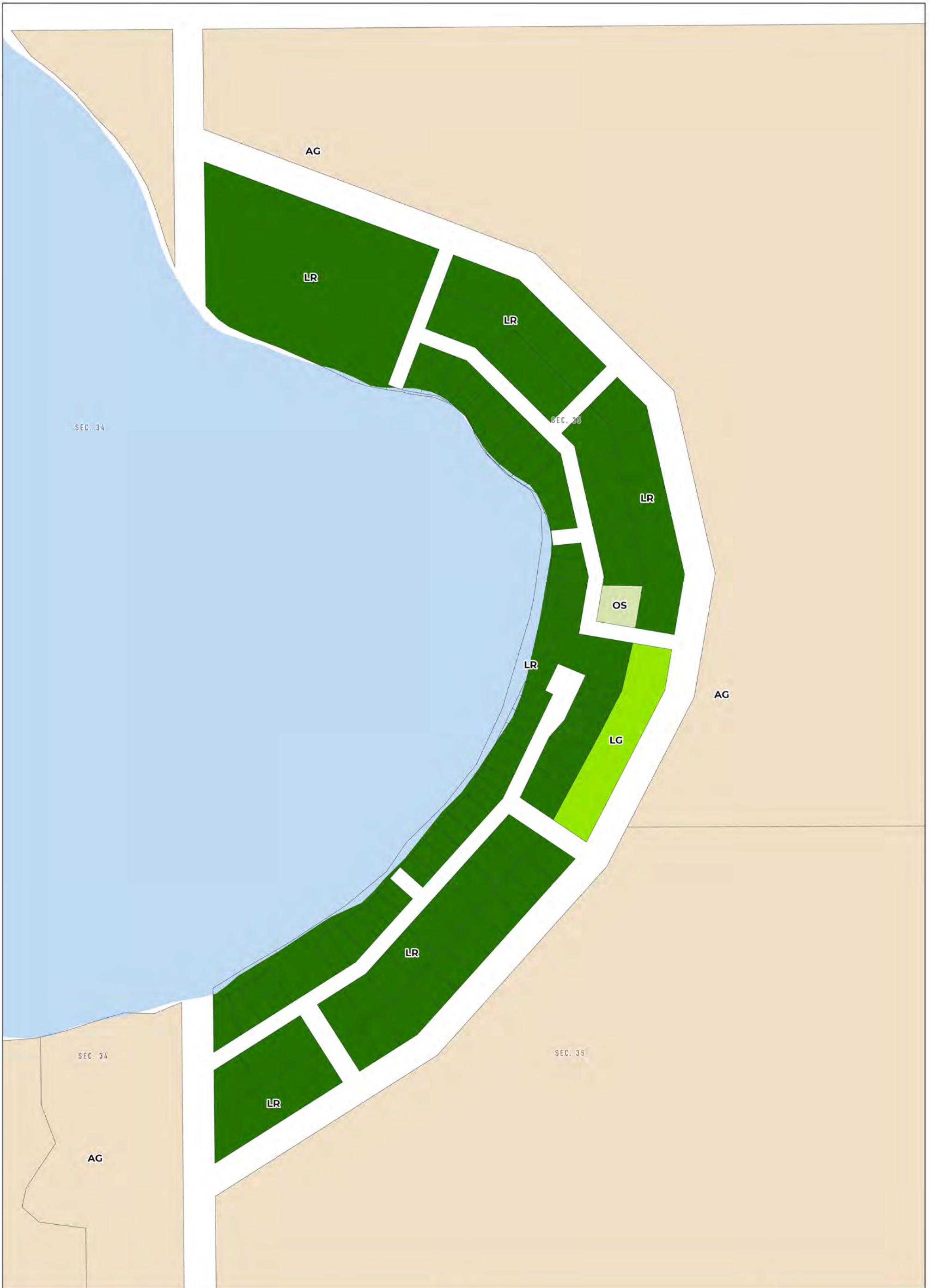


Legend

- Provincial and National Park
- General Development
- Lakeside General
- Lakeside Residential
- Agricultural General
- Open Space

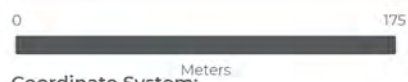
**Rural Municipality of
 Riding Mountain West**

Zoning ByLaw -
 Asessippi



URBAN
SYSTEMS

Project #: 5582.0001.01
 Author: DL
 Checked: AS
 Status: --
 Revision: --
 Date: 2026 / 3 / 24



Coordinate System:
NAD 1983 UTM Zone 14N

Data Sources:
 - Province of Manitoba
 - Natural Resources Canada
 - Open Street Map

The accuracy & completeness of information shown on this drawing is not guaranteed. It will be the responsibility of the user of the information shown on this drawing to locate & establish the precise location of all existing information whether shown or not.

Scale:
1:3,500
(When plotted at 11"x17")



Legend

Zoning Bylaw Designations

- Agricultural General
- Lakeside General
- Lakeside Residential
- Open Space

**Rural Municipality of
Riding Mountain West**

Zoning ByLaw -
Silver Beach